

# 211 Annual Report 2017 LaGrange County

## the NEEDS:

## the AGENCIES:

### top needs:

1. ELECTRICITY PAY. ASSIST. (140)
2. RENT PAY. ASSIST. (135)
3. FOOD STAMPS/ SNAP (88)
4. GAS PAY. ASSIST. (57)
5. FOOD PANTRIES (53)

### most referred:

1. Quite Knight
2. Brightpoint
3. Salvation Army
4. Division of Family Resources
5. Indiana Housing Now

### top unmet needs\*:

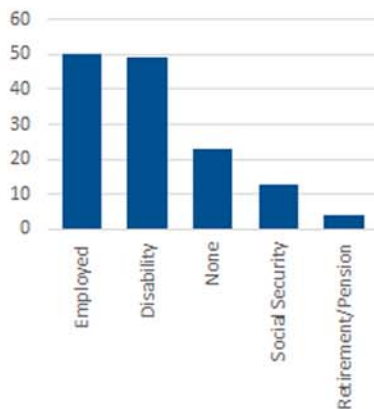
1. HOMELESS SHELTER (8)
2. ELECTRICITY PAY. ASSIST. (7)
3. CAR REPAIR (5)
4. HOME REPAIR (5)
5. FOOD PANTRIES (4)

total unmet needs: 75

\* Tax Assistance accounted for 10 needs.

\*unmet needs are recorded when there are no existing resources, when a person is ineligible, or refuses to utilize existing resources.

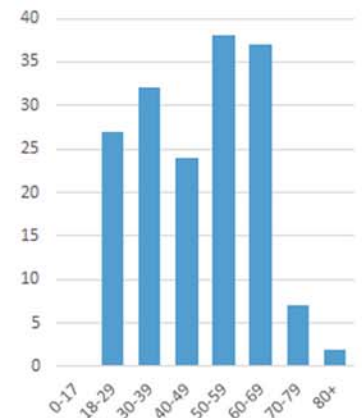
### income source:



### top 5 towns:

1. LaGrange
2. Wolcottville
3. Shipshewana
4. Howe
5. Topeka

### age of caller:



## the PEOPLE:

### 1st time callers:

50%

## the NUMBERS:

calls handled: 189  
referrals offered: 415

healthcare asks: 80  
homeless callers: 14  
SNAP asks: 161